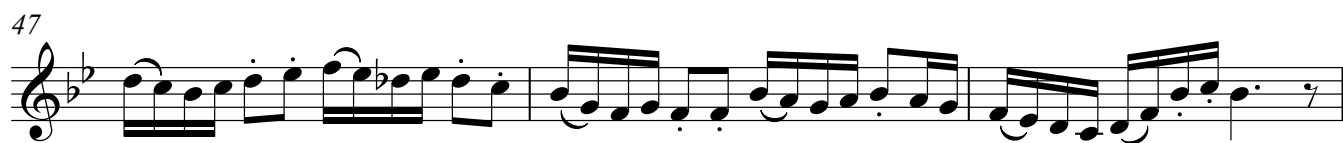
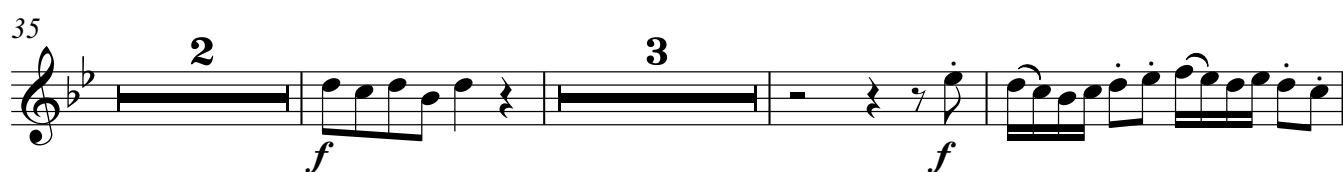
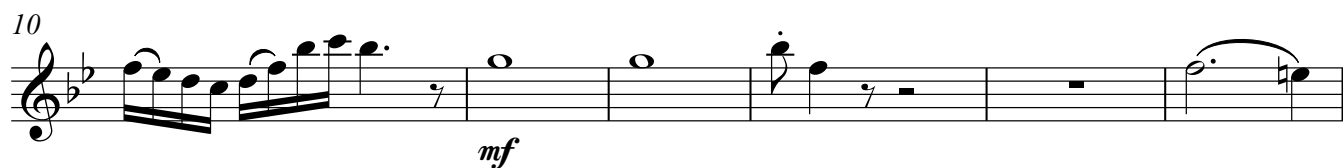


Oboe 1

Friedrich Radermacher

Es lebe die Musik

Allegro non troppo ♩ = 108



57

Staff 57-62: Treble clef, key of B-flat major. Measures 57-62. Measure 57: quarter rest, eighth note B-flat, quarter rest. Measure 58: quarter rest, quarter note C, quarter note D, quarter note E. Measure 59: quarter note D, quarter note C, quarter note B-flat, quarter note A. Measure 60: whole rest. Measure 61: quarter rest, quarter note C, quarter note D, quarter note E. Measure 62: quarter note D, quarter note C, quarter note B-flat, quarter note A. Dynamics: *p* at measures 58 and 61. Rehearsal mark 2 above measure 60.

63

Staff 63-69: Treble clef, key of B-flat major. Measures 63-69. Measure 63: quarter note B-flat, quarter note C, quarter note D, quarter note E. Measure 64: quarter note D, quarter note C, quarter note B-flat, quarter note A. Measure 65: quarter rest, quarter note C, quarter note D, quarter note E. Measure 66: whole rest. Measure 67: quarter rest, eighth note B-flat, eighth note C, eighth note D, eighth note E. Measure 68: quarter note D, quarter note C, quarter note B-flat, quarter note A. Measure 69: quarter note G, quarter note F, quarter note E, quarter note D. Dynamics: *f* at measure 67. Rehearsal mark 4 above measure 66.

70

Staff 70-76: Treble clef, key of B-flat major. Measures 70-76. Measure 70: quarter note B-flat, quarter note C, quarter note D, quarter note E. Measure 71: quarter note D, quarter note C, quarter note B-flat, quarter note A. Measure 72: quarter note G, quarter note F, quarter note E, quarter note D. Measure 73: quarter note C, quarter note B-flat, quarter note A, quarter note G. Measure 74: quarter rest, quarter note C, quarter note D, quarter note E. Measure 75: quarter note D, quarter note C, quarter note B-flat, quarter note A. Measure 76: quarter note G, quarter note F, quarter note E, quarter note D. Dynamics: *p* at measure 74. Rehearsal mark 3 above measure 75.

77

Staff 77-82: Treble clef, key of B-flat major. Measures 77-82. Measure 77: whole rest. Measure 78: quarter rest, quarter note C, quarter note D, quarter note E. Measure 79: quarter note D, quarter note C, quarter note B-flat, quarter note A. Measure 80: quarter note G, quarter note F, quarter note E, quarter note D. Measure 81: quarter rest, quarter note C, quarter note D, quarter note E. Measure 82: quarter note D, quarter note C, quarter note B-flat, quarter note A. Dynamics: *p* at measure 78. Rehearsal mark 2 above measure 77.

83

Staff 83-86: Treble clef, key of B-flat major. Measures 83-86. Measure 83: quarter rest, eighth note B-flat, eighth note C, eighth note D, eighth note E. Measure 84: quarter note D, quarter note C, quarter note B-flat, quarter note A. Measure 85: quarter note G, quarter note F, quarter note E, quarter note D. Measure 86: quarter note C, quarter note B-flat, quarter note A, quarter note G. Dynamics: *mf* at measure 83.

87

Staff 87-91: Treble clef, key of B-flat major. Measures 87-91. Measure 87: whole rest. Measure 88: quarter rest, eighth note B-flat, eighth note C, eighth note D, eighth note E. Measure 89: quarter note D, quarter note C, quarter note B-flat, quarter note A. Measure 90: quarter note G, quarter note F, quarter note E, quarter note D. Measure 91: quarter note C, quarter note B-flat, quarter note A, quarter note G. Dynamics: *f* at measure 88.

92

Staff 92-99: Treble clef, key of B-flat major. Measures 92-99. Measure 92: quarter note B-flat, quarter note C, quarter note D, quarter note E. Measure 93: quarter note D, quarter note C, quarter note B-flat, quarter note A. Measure 94: quarter note G, quarter note F, quarter note E, quarter note D. Measure 95: quarter note C, quarter note B-flat, quarter note A, quarter note G. Measure 96: whole rest. Measure 97: whole rest. Measure 98: whole rest. Measure 99: whole rest. Dynamics: *pp* at measure 92. Rehearsal mark 4 above measure 96. *rit.* above measure 98. Rehearsal mark 2 above measure 99.

100 a tempo ♩ = 108

Staff 100-105: Treble clef, key of B-flat major. Measures 100-105. Measure 100: quarter note B-flat, quarter note C, quarter note D, quarter note E. Measure 101: quarter note D, quarter note C, quarter note B-flat, quarter note A. Measure 102: quarter note G, quarter note F, quarter note E, quarter note D. Measure 103: quarter note C, quarter note B-flat, quarter note A, quarter note G. Measure 104: quarter note F, quarter note E, quarter note D, quarter note C. Measure 105: quarter note B-flat, quarter note A, quarter note G, quarter note F. Dynamics: *pp* at measure 100.

106

Staff 106-112: Treble clef, key of B-flat major. Measures 106-112. Measure 106: whole rest. Measure 107: quarter rest, eighth note B-flat, eighth note C, eighth note D, eighth note E. Measure 108: quarter note D, quarter note C, quarter note B-flat, quarter note A. Measure 109: quarter note G, quarter note F, quarter note E, quarter note D. Measure 110: quarter note C, quarter note B-flat, quarter note A, quarter note G. Measure 111: quarter note F, quarter note E, quarter note D, quarter note C. Measure 112: quarter note B-flat, quarter note A, quarter note G, quarter note F. Dynamics: *mf* at measure 107. Rehearsal mark 5 above measure 106.

113

Staff 113-118: Treble clef, key of B-flat major. Measures 113-118. Measure 113: quarter rest, eighth note B-flat, eighth note C, eighth note D, eighth note E. Measure 114: quarter note D, quarter note C, quarter note B-flat, quarter note A. Measure 115: quarter note G, quarter note F, quarter note E, quarter note D. Measure 116: quarter note C, quarter note B-flat, quarter note A, quarter note G. Measure 117: quarter note F, quarter note E, quarter note D, quarter note C. Measure 118: quarter note B-flat, quarter note A, quarter note G, quarter note F. Dynamics: *f* at measure 113. Rehearsal mark 2 above measure 117.

119

*f*

122

*ff*

126

*p*

2

4

135

138

*ff*

5'19.6"